

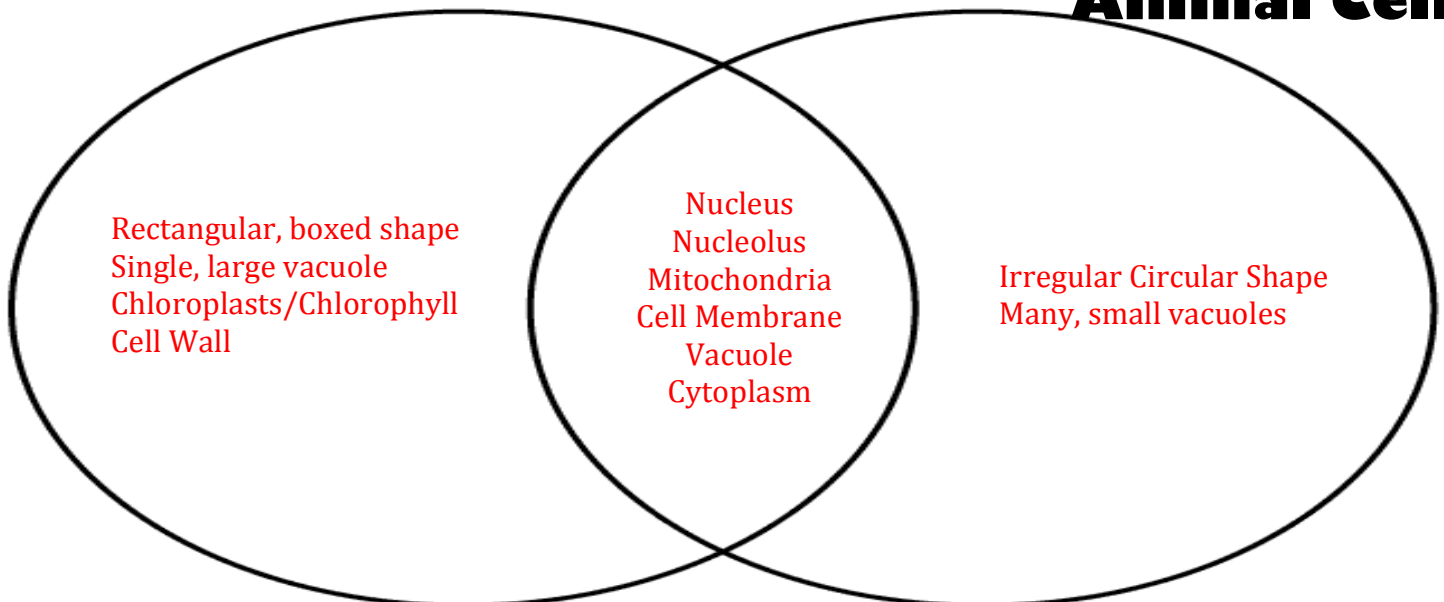
LIFE: PLANT & ANIMAL CELLS

#	TERM	DEFINITION
1	CELL	Smallest structure of a living thing that contains organelles
2	ORGANELLE	The parts of a cell that carry out life processes
3	CYTOPLASM	The “jelly-like” thick watery substance that holds the organelles in place to protect them from moving around
4	NUCLEUS	The “control center” of the cell that directs the actions of all the other organelles in the cell
5	NUCLEOLUS	The dark, dense center of the nucleus that contains all the DNA/chromosomes that determine the traits of the organism
6	CELL MEMBRANE	The flexible outer covering in ALL cells that contains tiny holes that allow important materials to enter, and wastes to leave the cell
7	MITOCHONDRIA	The “powerhouse” of the cell that takes the nutrients that enter the cell and convert them to energy
8	VACUOLE	The “pantry” of ALL cell that stores food, water & waste
9	CELL WALL	The rigid (hard) outer covering in plant cells that supports and protects the cell
10	CHLOROPLAST	A structure in plant cells that produces chlorophyll which is a green chemical that converts the sun’s energy into food for the plant

COMPARE & CONTRAST:

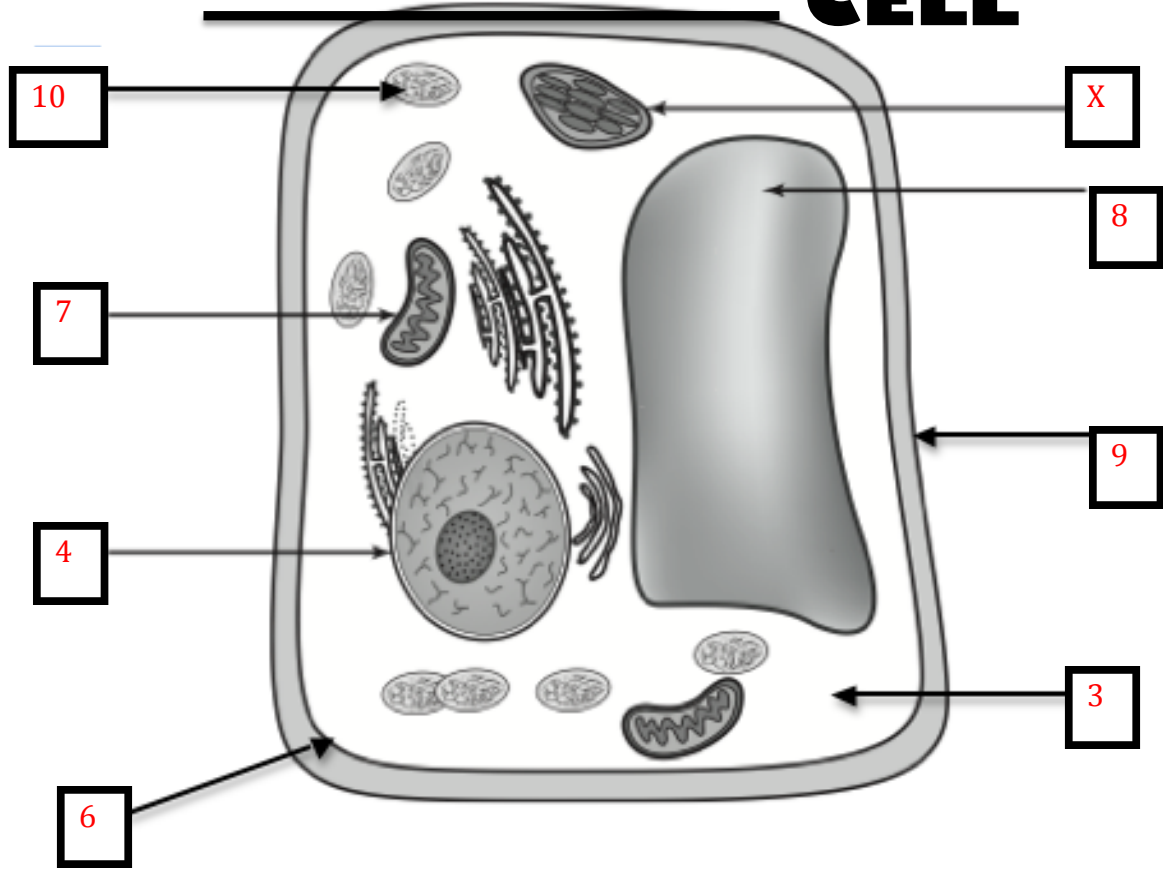
Plant Cell

Animal Cell



PLANT

CELL



Animal

CELL

